



ESPRIT Ex

5^{ème} génération



TRIANGLE
MANUFACTURE ELECTROACOUSTIQUE



1180

The first model to be marketed. Original and technical, it was highly successful with high-end distributors and started the passion for TRIANGLE.

1980



ZENITH 1

The first sound system to use loudspeakers designed and manufactured by TRIANGLE, a turning-point for the brand, as a result of which Triangle decided to develop this special skill.

1985



ANTAL TZX

The first generation of the now legendary ANTAL-; This slender column opened the way for high-end products.

1994



ANTAL Es

The more technical fourth generation with a plinth, horn loaded tweeter and compression chamber.

2004



25 years of **passion and innovation** 18 gold Diapasons*

Created and designed by TRIANGLE, France

TRIANGLE, the French electroacoustic system manufacturer has been designing, manufacturing and assembling **high-end sound systems** for more than **25 years** in Soissons, the cradle of the Kings of France.

Since its beginnings, TRIANGLE has made **technological research** and **innovation its priorities** with the aim of offering music-lovers a **natural sound** of high quality. Developed by a team of enthusiastic engineers and technicians seeking constant **improvement and innovation**, TRIANGLE's sound systems are unique. Each component has been devised, engineered and developed according to a **schedule of specifications exclusive to Triangle**.

The award of **18 gold Diapasons* in 19 years** bears witness to the **undeniable quality of a sound reproduction system**, that embodies the beauty and emotion of music.

*The «Diapason» is a prestigious French award for high-quality sound reproduction equipment.



ANTAL Ex





the **TRIANGLE** sound

“So close to me, so clear, I wasn’t alone that night. I knew that when I played that album I’d be able to escape once more, but I didn’t realise I’d be opening up new horizons.

They were all there, in my living room, drummer, guitarist, choirs and violins

With my eyes closed, I discovered a new source of inspiration in my own home, an invitation to escape.

With my eyes open, I had just achieved what I hadn’t dared to dream of as a child - sound exactly as it is, alive! Bringing to life my convictions which cannot tolerate any compromise where aesthetics and results are concerned. ”

With its **ESPRIT Ex** range, TRIANGLE has blazed the trail of a **new uncompromising quest.**

ESPRIT and Reason

Exciting, by its live and dynamic nature

Swings, with its fleet-footed pace & rhythm

Powerful, in its sense of seduction

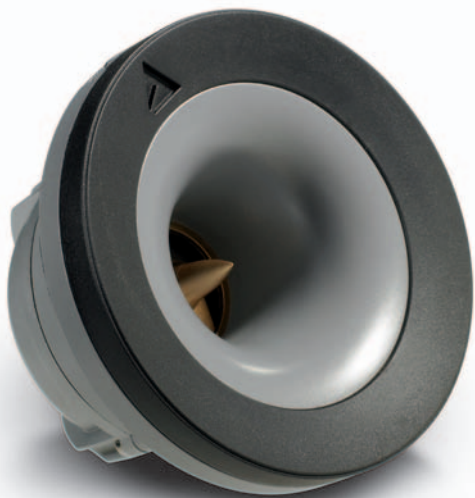
Research, the never ending quest to innovate

Integration, simple shapes with elongated lines

Temptation, in reaching the magical world of High-Fidelity and Home-Cinema

Tweeter TZ 2500: live sound

The tweeter is of essential importance in TRIANGLE's history. This driver is designed to reproduce high-frequency sounds such as the cymbals of a percussion or the strings of a clavichord. The performance of the TRIANGLE TZ2500 tweeter is based on the use of a titanium dome combined with a compression chamber that favours high sensitivity with minimal distortion and excellent focus. The rapid variations in sound that are called «transitory» are true to reality and reproduce an incomparable «live» image.



« All the models in the ESPRIT Ex range, including the «Comète», use a deeper compression chamber and a titanium dome tweeter.

PVC was used rather than aluminium.

TRIANGLE has also remodelled the phase plug.

When listening, the new tweeter sounds more linear with no fatigue on very high frequencies.

The sound is gentler and more refined. »

Sam Tellig, Stereophile.

Sound-proof room used to complete the manufacture of TRIANGLE's loudspeakers



the **midrange's** amazing reproduction

The ANTAL Ex has the capacity of reproducing the frequencies most audible to the human ear. It thus enables the extremely sensitive ear to perceive any deviation from the original signal.

Based on its experience, TRIANGLE recommends using a cellulose pulp membrane because it is so light and introduces very little colouration. This membrane, combined with a finely-pleated peripheral suspension, enables voices to be reproduced with amazing precision.

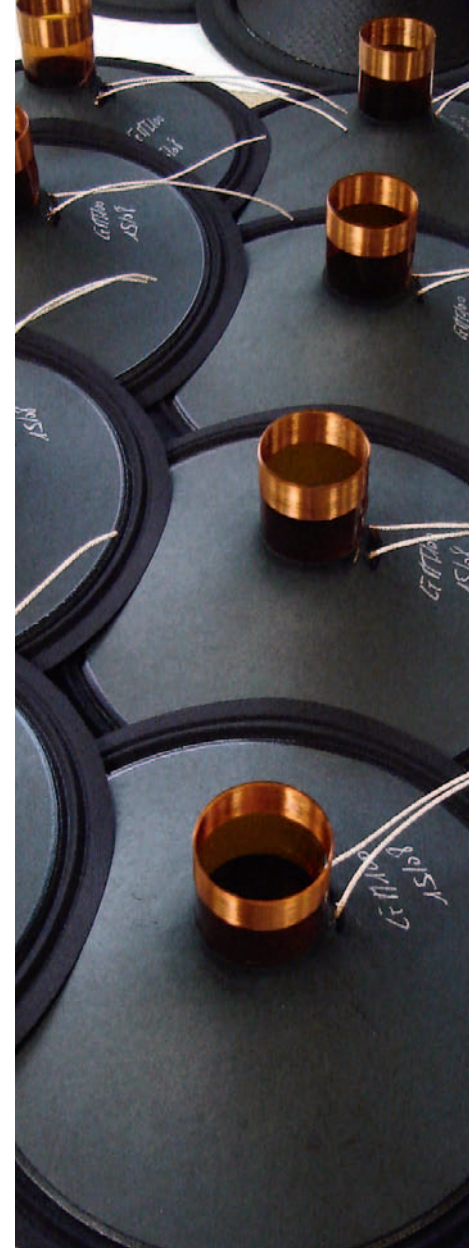


« Lovers of unctuous sounds, deep colours and downy textures will doubtless appreciate a particularly flavoursome midrange, as fruity as a Rhône wine.

The trembling sensuality of voices and wind instruments are emotionally charged. »

*Philippe Venturini,
Le Monde de la Musique.*

Checking TRIANGLE's driver assembly.



bass frequencies

The ALTEA Ex and ANTAL Ex are equipped with the T16EF100SGC1 driver. With its fibreglass membrane, this driver offers an excellent compromise between rigidity and light weight. It is pierced so as more quickly to dissipate the heat released by the coil. When listening to it, bass notes come across very clearly, making the midrange all the more natural and transparent.



« We worked on the cone so as to deaden any resonance in the «upper bass frequencies» that might subsist after filtering. When listening to them, bass notes sound as they should, making the midrange more natural and transparent »

*Thomas Robert,
acoustic manager.*

Stretched jersey grille bearing the TRIANGLE logo



spec technology



The Spec (Single point energy conductor) is a brushed steel point.

Like the cello, it evacuates part of the mechanical energy towards the ground, thus adding to the excellence of the sound. The cabinet vibrates less and thus does not affect sound reproduction. This system demonstrates how TRIANGLE's attention to detail makes the difference.



a well-thought-out cabinet

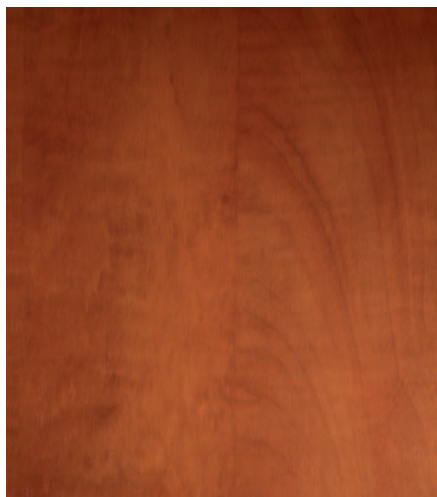
vibration control

The behaviour of a cabinet can charge the drivers and is particularly important. It can introduce disharmonies and colour the musical rendering. A judicious choice between internal volume and bracing enables this phenomenon to be avoided.

choice of finishes

The cabinets offer full quality guarantees. Two finishes are available: the traditional and refined elegance of «cognac» and the contemporary sensation of «black».

Cognac finish



Black finish



the principal sound systems: rediscover the joy of listening



Universal
bookshelf
speaker stand
with decoupling
spikes. Can be
filled with sand.

TS200



TITUS Ex

The bookshelf loudspeaker which can easily be integrated into a piece of furniture or placed on a TS200 stand. Its 5" driver will behave perfectly with bass and midrange notes while retaining the dynamics of the TRIANGLE sound. Finishes: black or cognac.
Recommended for a 100 - 270 sq ft (10-25 m²) room.

COMETE Ex

Designed more to be stood on a stand, this loudspeaker offers the feeling of listening to a floorstanding system but takes up less room. The new bass-driver rubber half-roll suspension system enables very good speed to be retained. Finishes: black or cognac.
Recommended for a 160 - 320 sq ft (15-30 m²) room.

Number of tracks / type
Sensitivity [dB / W / m]
Band width (+/- 3dB Hz-KHz)
Admissible power (W Rms)
Minimum impedance (ohms)
Cabinet dimensions (inc: HxWxD)
Cabinet dimensions (mm: HxWxD)
Net weight (lbs / Kg)

Number of tracks / type
Sensitivity [dB / W / m]
Band width (+/- 3dB Hz-KHz)
Admissible power (W Rms)
Minimum impedance (ohms)
Cabinet dimensions (inc: HxWxD)
Cabinet dimensions (mm: HxWxD)
Net weight (lbs / Kg)

Number of tracks / type
Sensitivity [dB / W / m]
Band width (+/- 3dB Hz-KHz)
Admissible power (W Rms)
Minimum impedance (ohms)
Cabinet dimensions (inc: HxWxD)
Cabinet dimensions (mm: HxWxD)
Dimensions with stand (inc: HxWxD)
Dimensions with stand (mm: HxWxD)
Net weight (lbs / Kg)

Number of tracks / type
Sensitivity [dB / W / m]
Band width (+/- 3dB Hz-KHz)
Admissible power (W Rms)
Minimum impedance (ohms)
Cabinet dimensions (inc: HxWxD)
Cabinet dimensions (mm: HxWxD)
Dimensions with stand (inc: HxWxD)
Dimensions with stand (mm: HxWxD)
Net weight (lbs / Kg)

TITUS Ex

2 / Bass Reflex

91

55-20

60

3,8

12,6 x 7,5 x 11,8

320 x 190 x 300

14,3 / 6,5

COMETE Ex

2 / Bass Reflex

90

50-20

80

4,4

16,5 x 7,9 x 13,2

420 x 200 x 335

18,7 / 8,5

ALTEA Ex

2,5 / Bass Reflex

91

45-20

100

4,4

39,4 x 7,9 x 14

1000 x 200 x 355

41,7 x 14,6 x 15

1060 x 370 x 380

44 / 20

ANTAL Ex

3 / Bass Reflex

91

40-20

120

3,4

42,5 x 7,9 x 14

108 x 200 x 355

44,9 x 14,6 x 15

1140 x 370 x 380

49,5 / 22,5



ALTEA Ex

An excellent compromise between performance and size. With its 6,5" diameter, its mid-bass driver will assist the bass driver to reproduce their respective frequencies. Finishes: black or cognac. Recommended for a 215 - 430 sq ft (20-40 m²) room.



ANTAL Ex

The most complete loudspeaker of the Ex series. The 5" midrange driver was developed exclusively for this model. Ideal for large rooms, the exceptional sound reproduction of its two bass drivers puts you in the middle of the orchestra. Finishes: black or cognac. Recommended for a 320 - 540 sq ft (30-50 m²) room.





Rediscover the **thrill** of the big screen

“I wanted to achieve the perfect union between sound and image without making any concessions ...

Faithful I am and faithful I shall remain: what I discovered on my internal travels when listening to music. I wanted it for the image. ESPRIT had to make the action real if it was to captivate me.

That same depth, that same aesthetic and that same impression of being the actor of my passions: a wager won. All I needed to do was increase the levels of my emotions.”

ESPRIT Ex, Innovative and accessible solutions to **satisfy** your **emotions** without compromise.

Audio-Video add-ons



VOCE Ex

The openness and presence you can obtain from listening to stereo recordings on this centre channel will transport you straight into the world of film.

With its 5" diameter drivers and suspension system, VOCE is compact but capable of reproducing the lowest frequencies.

Number of tracks / type	2 / Bass Reflex
Sensitivity [dB / W / m]	92
Band width (+/- 3dB Hz-KHz)	60-20
Admissible power [W Rms]	80
Minimum impedance [ohms]	5,1
Cabinet dimensions [in: HxWxD]	7,5 x 21,1 x 12,2
Cabinet dimensions [mm: HxWxD]	190 x 535 x 310
Net weight [lbs / Kg]	22 / 10



METEOR 0.1 Tc

The ideal complement to the ESPRIT range for forming an audio-video system, this subwoofer was designed to favour speed and dynamics. Its cube shape enables it to fit perfectly into any living space.

METEOR 0.1 Tc includes a remote control for adjusting both frequency and level.

Type	Active subwoofer
Number of drivers	1
Diameter [in / mm]	8 / 210
Bandwidth (+/-3dB Hz-KHz)	35-160
Amplifier power [W Rms]	100
Remote control	yes
Dimensions [in: HxWxD]	14,6 x 12,6 x 13,4
Dimensions [mm: HxWxD]	370 x 320 x 320
Net weight [lbs / Kg]	31,9 / 14,5



HEYDA Ex

This 5" deep rear channel speaker can be hung on a wall. Its drivers are very similar to those of the TITUS Ex so as to produce a homogeneous sound.

The HEYDA Ex drops off at 100 Hz to facilitate integration with the subwoofer.

Number of tracks / type	2 / closed
Sensitivity [dB / W / m]	91
Band width (+/- 3dB Hz-KHz)	100-20
Admissible power [W Rms]	60
Minimum impedance [ohms]	3,8
Cabinet dimensions [in: HxWxD]	12,6 x 7,5 x 5,1
Cabinet dimensions [mm: HxWxD]	320 x 190 x 130
Net weight [lbs / Kg]	11 / 5



TS300

Compact universal centre channel stand with adjustable height setting and decoupling system.



TC2250

High-performance 2 x 2,5 mm² cable in pure multistrand oxygen-free copper.



SILVER
GHOST

Top-of-the-range 8mm round cable made of a combination of silver-plated copper strands and oxygen-free copper wires.

the ESPRIT Ex **Audio-Video** combinations



COMETE Ex
+ HEYDA Ex
+ METEOR 0.1 Tc + VOCE Ex



ANTAL Ex
+ HEYDA Ex
+ METEOR 0.1 Tc + VOCE Ex

ESPRIT Ex,
innovative and accessible solutions to
satisfy your **emotions** without compromise.



TRIANGLE
MANUFACTURE ELECTROACOUSTIQUE

Avenue Flandres Dunkerque - Z.I. les Etomelles - 02200 Villeneuve Saint Germain - France
T. +33 (0)3 23 75 38 20 - F. +33 (0)3 23 75 38 21

www.triangle-fr.com