



Haicom HI-603

◀ *Real-Time
Tracker*

HI-603



4 710635 515003

Haicom HI-603

INTRODUCTIONS:

HI-603 is an all in one tracking solution offering your GPS/SMS/GSM/DTMF/GPRS in Real Time solutions.

Haicom HI-603 is most suitable for the tracking solution and can do the real time tracking and you see the object moving on the map live simultaneously. HI-603 comes with re-chargeable battery for the personal tracking purposes. Just put HI-603 on pocket, the back pack, carton, motorbike, etc. or any moving object, the user checks the object globally with different and flexible ways of tracking.

Along with it, under DTMF mode, there is free PC base Haicom Tracking software which takes few steps and you can see the moving object live on the map.

Haicom tracker is multi-functional GPS/SMS/GSM/GPRS tracker. User can switch the DTMF mode or GPRS mode from any phone with few phone digits pressed.

With DTMF tracking mode, Haicom trackers need only a normal SIM card (prepaid or postpaid) of any operator and is ready for use, there are NO other charges than the phone calls made from the tracker to your phones.

Main unit overview:



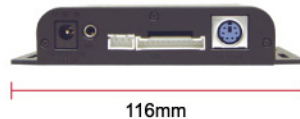
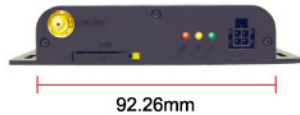
- 1 GSM antenna plug
- 2 SIM card holder
- 3 DTMF transmission status
- 4 GSM signal status
- 5 Power status
- 6 GPS receiver plug status



- 1 12V~24V cigarette lighter power in
- 2 Connected to tapping microphone
- 3 Connected to vibration or microwave sensor
- 4 Connected to vehicle control wirings
- 5 Connected to the HI-403BT Bluetooth box or HI-SDL data logger

Haicom HI-603

Dimension



LED indicator



DTMF transmission status	DTMF transmission: Stay on
GSM signal status	GSM stand by: Off 3 seconds / On 75 micro seconds Searching network or no SIM card: On 600 micro seconds / Off 600 micro seconds GSM network connected: Stay On
Power status	Powered: Stay on Power off: Off

Haicom HI-603

HI-603 decoder overview:



LED Color	Stay on	Blinking
Amber	GPS data valid (3D fixed)	GPS data not valid
Red	Decoding(4 seconds interval)	
Green	Receiving data	

Packing: Standard packing

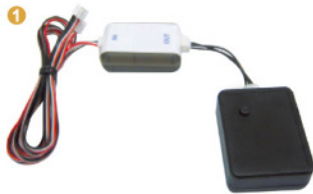
- 1 HI-603 main unit
- 2 GSM antenna
- 3 GPS receiver
- 4 Decoder
- 5 Vehicle control wires
- 6 Tapping microphone
- 7 Relay
- 8 Vibration



Haicom HI-603

Optional accessories

- 1 Microwave sensor
- 2 HI-403BT cube Bluetooth box
- 3 HI-SDL SD data logger
- 4 12V~24V Cigarette lighter



Getting Started

1. Point in the yellow part with a pen to release the SIM card holder.



2. Place the local SIM card on the holder.
(Make sure disable the SIM card pin code requirement)



3. Connect the GSM antenna and GPS receiver to HI-603



Haicom HI-603

DTMF Tracking HOW TO USE DTMF Tracking

HI-603 DTMF tracking solution provides user-friendly real-time tracking with a standard SIM card. Simply call the tracker, listen for the dial tone and put the phone speaker to the decoder microphone. The decoder will decode the dial tone into a standard GPS NMEA data. With inclusive Haicom Tracking software, user can see the object moving live on Google map.

Step by step DTMF tracking:
Install the driver first

1.
Connect the decoder to the USB port **



Track it easy **1.2.3.4**

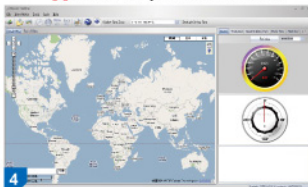
2.
Call the Tracker attached the phone speaker



3. Open the software, Select the com port and start to track



4. You will see your Real-time location



HI-603 ADVANCE SETTINGS

User can set up HI-603 varies commands via the regular dial tone from any regular phone (see the Appendix C for simple list of the dial tone commands) . After the connection, put in your pass code 0000 to enter different set up procedures.

HI-603 has two types of settings:

- (1)Basic setting (*): Set up the device pass code, anti-theft, SOS 6 sets of dial back telephone numbers.
- (2)Advance settings (#): Set up PIN code, and activate or deactivate varies functions.

HI-603 has two setting modes:

1.No pass code required mode

2.pass code required

When the device is set up as no pass code required, all commands will be done with out a pass code to set up the HI-603 for no SIM card PIN code mode

- 1.Dial and connected with the HI-603 from the normal phone press the 4 digit pass code **0000**
- 2.Press **0 #** to disable the PIN code require setting

3.Pass code required mode

When the device is set up as pass code required mode, all commands will be done after the pass code keyed-in and certified **0000**

The pass code required mode must be done for some operations:

Car oil cutting operation (**40, 4#, 4***)

Dial and connect to the HI-602DT -> key-in " # " and " # " four digits pass code " -> after the pass code certified ->

40 immediately oil cutting

4# oil cutting when the car stop – 0 km (for safety reason)

4* dis-able the oil cutting

1 TO CHANGE THE PASS CODE

Dial and connect HI-602DT

Press # Press **4 digits** pass code **0000** Hear a long " du " Perss **0** Press the prefer 4 digit pass code twice and press * to complete the setting you will Hear a long " du " to verify the pass code or " du du du d u " for incorrect key in

3.Dial and connected with the HI-602DT from the normal phone

Press # then, press the 4 digit pass codes

Press **0** then, press the 4 digit SIM card pass codes twice to complete the setting

Haicom HI-603

TO programming three call back numbers(1st set)

Dial and connect HI-603

Press *** Press 4 digits pass code 0000 Hear a long " du " Press 1 then, press the first set (anti-thief) dial back telephone number. And Press * to complete the procedure. you will Hear a long " du " to verify the pass code or " du d u d u " for incorrect key in

Press 2 then, press the second set (anti-thief) dial back telephone number. and press * to complete the procedure.

Press 3 then, press the third set (anti-thief) dial back telephone number. and press * to complete the procedure.

TO programming three call back numbers(4th set)

Dial and connect HI-603

Press *** Press 4 digits pass code 0000 Hear a long " du " Press 4 then, press the first set SMS back telephone number. And Press * to complete the procedure. you will Hear a long " du " to verify the pass code or " du d u d u " for incorrect key in Press 5 then, press the fifth set (SOS) dial back telephone number. Press * to complete the procedure.

Press 6 then, press the sixth set (SOS) dial back telephone number. Press * to complete the procedure.

* The dial back telephone digit can be set from 7~16 digits

SMS coordinate send back settings (21, 22, 23)

1. after programming the SMS call back number Call the tracker and connect press # and the pass code 0000 and 21 the tracker will hang up
2. you will receive an SMS with the real time location

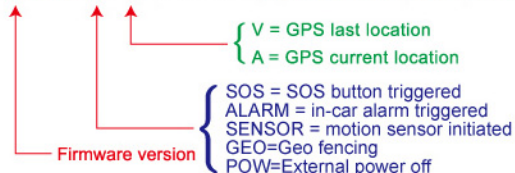
The SMS message will look like this:

* HC-V.3.5*SOS*V,N, 23°51' 15.6, E, 120° 41' 09.6, 020.3, 358.2*

Example and explanations:

Latitude	Longitude	Speed (sea mile)	Direction (360)
* HC-V.3.5*SOS*V,N,	23°51' 15.6,	E, 120° 41' 09.6,	020.3, 358.2*

* HC-V.3.5*SOS*V,N, 23°51' 15.6, E, 120° 41' 09.6, 020.3, 358.2*



To cancel the call back telephone number 3 for example

Dial and connect HI-603 Press *** Press 4 digits pass code 0000 Hear a long " du " Press 3 * * hear nothing -> for canceling the third dial back telephone number.

To set up the GPRS data send back time interval

Dial and connect HI-603 Press *** Press 4 digits pass code 0000 Hear a long " du " Press " 3306 # " hear a " du " for verify the command set up successfully.

Remarks:

1. The "0000" is the default pass code
2. 33 is the command for set up the GPRS send back interval
3. 006 is auto send back every 30 seconds (can set from 001 to 255 interval: about seconds to minutes)

To re-flash all the settings back to defaults:

1. Dial and connected with the HI-603. Hear the continue dial tone
2. Press *96#03890 and hang up

1. Basic settings (*)

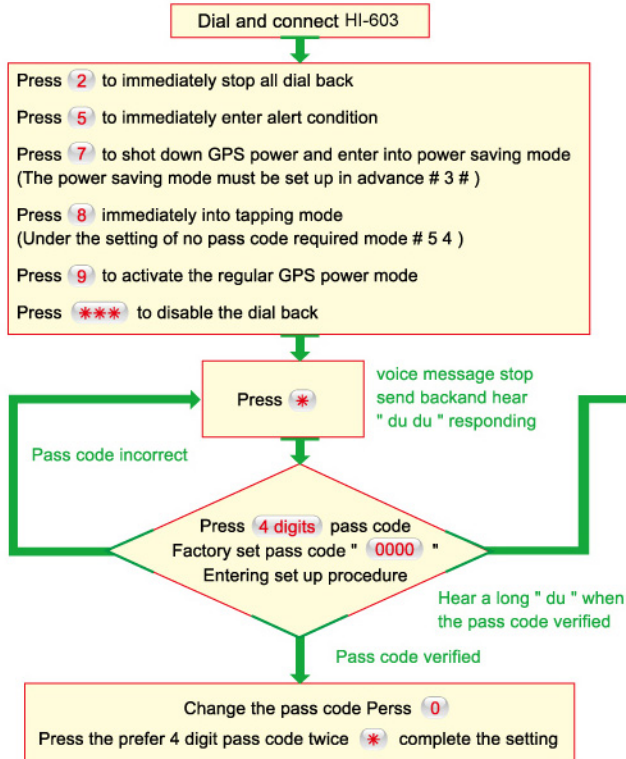
Set up the device pass code, anti-thief, SOS 6 sets of dial back telephone numbers. User can set up 6 sets of dial back telephone numbers inside HI-603. The first 3 numbers are for anti-thief dial back and the last 3 numbers are for SOS SMS emergency dial back.

When the moving sensor, ultra-sound sensor and power cut off situation activated, HI-603 will automatically dial back the pre-set telephone numbers in sequence. When receive the call from the anti-thief dial back, user will hear the voice message. You can press *** to reset the alarm. If not key in the *** HI-603 will then send the SMS message back to the host phone in case of the host phone run out of power or under GSM weak signal.

The last 3 numbers are for SOS emergency dial back. When the panic button was activated, HI-603 will dial back the 3 pre-set telephone numbers in sequence.

Haicom HI-603

Basic setting flow chart (*):



Hear a long " du " to verify the pass code or " du d u du d u " for incorrect key in

- Press 1 then, press the first set (anti-thief) dial back telephone number.
Press * to complete the procedure.
- Press 2 then, press the second set (anti-thief) dial back telephone number.
Press * to complete the procedure.
- Press 3 then, press the third set (anti-thief) dial back telephone number.
Press * to complete the procedure.
- Press 4 then, press the fourth set (SOS) dial back telephone number.
Press * to complete the procedure.
- Press 5 then, press the fifth set (SOS) dial back telephone number.
Press * to complete the procedure.
- Press 6 then, press the sixth set (SOS) dial back telephone number.
Press * to complete the procedure.

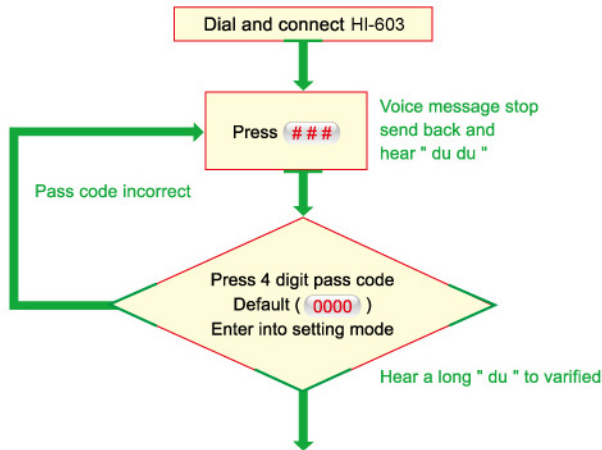
EXAMPLE:

Press " 3 0912 123456* " for set up the third anti-thief dial back telephone number

Press " 3* " hear nothing -> for canceling the third dial back telephone number

Haicom HI-603

Advance setting flow chart (#):



(0) PIN code set up	(1) Temporary disable tracking encrypted mode	(2* , 2#) 2*	(3#)
(40)	(51) Disable vibration or Ultra-sound function mode (Default)	(52) Activate vibration or Ultra-sound function mode	(53) Vibration and ultra-sound Immediately dial back settings

(54) Tapping no pass code required settings	(1) Temporary disable tracking encrypted mode	(55) Tapping with pass code required	(56) Vibration and ultra-sound Function with delay dial back
(57) Tracking without encryption Setting	(58) Tracking with encryption Setting	(2* , 2#) SMS function dial back 2* activated (default) 2# disable	(21 , 22 , 23) Send back the GPS coordinates Via SMS to designated phone number
(24) SMS coordinates sent back To control center	(25 ~ 29) Coordinates send to designated Phone numbers from the web	(6*) GPS location fixed Dial back	(6#) Dial back when GPS in certain speed
(3#) Activate GPS power Saving mode	(3*) Disable the GPS power Saving mode	(71) 3 sets anti-thief dial back numbers testing	(74) 3 sets SOS dial back numbers testing
(77) SMS message dial back testing	(40) Immediately Oil cutting	(4*) Disable oil cutting	(4#) Oil cutting when speed at 0 km
(8) In-car tapping	(9) Back to tracking mode From the settings		

Haicom HI-603

2. Advance settings (#)

The HI-603 advance settings are most for the functions which no need frequent changed:

1. SIM card PIN code settings (0)
2. Voice message encrypted settings (1, 57, 58)
3. SMS coordinate send back settings (21, 22, 23)
4. Send coordinate via SMS to server settings (24, 25, 26, 27, 28, 29)
5. Anti-theft function settings (51, 52)
6. Tapping function encrypted settings (54, 55)
7. Moving sensor status settings (53, 56)
8. GPS position fix, certain speed dial back (6*, 6#)
9. Dial back number function testing (71, 74)
10. System SMS function testing (77)

SIM card PIN code settings (0)

To ensure the personal privacy, the SIM card inside HI-603 may need to be changed to prevent from some others use it.

Please put the SIM card into any normal GSM phone and change the 4 digits SIM card PIN codes. Then, take out the SIM card and put it into the HI-603

Each time when the HI-603 switched on, the SIM card PIN code (4 digits) will automatically key in.

Set up the HI-603 for no need any SIM card PIN code:

1. Dial and connected with the HI-603 from the normal phone
2. Press # then, press the 4 digit pass codes
3. Press 0 then, press the 4 digit SIM card pass codes twice to complete the setting

For instance:

0 5 6 7 8 5 6 7 8 # -> set the SIM card PIN code as 5678

Press 0 # to disable the PIN code require setting

Voice message encrypted settings (1)

The 57 and 58 are for set up whether or not the pass code required when the voice message send back. When the HI-603 set as 58 mode, the pass code is required (press # then, press 4 digit pass code and press 1) when HI-603 need to send back voice message (send back 3 minutes or 50 sets of data).

SMS coordinate send back settings (2*, 2#, 21, 22, 23)

After the settings, HI-603 will send the current moving object location via SMS message to designated telephone numbers: the pre-set 3 sets dial back telephone numbers from the basic settings under the condition of the SMS send back function is activated.

1. Dial and connected with the HI-603 from the normal phone
 2. Press # then, press the 4 digit pass codes
 3. Press 2# to disable the SMS message send back function and activate it by press 2*
- Press 21 or 22 or 23 and the designated telephone will receive the coordinate via SMS in 10 seconds

Regarding to the telephone settings, please refer to the previous basic setting section in item 1

Send the GPS coordinates to the server via SMS settings (24, 25, 26, 27, 28, 29)

This is HI-603 extra function for use HI-603 via Internet to check the moving objects.

Via SMS message network, HI-603 can send the current GPS coordinates to the Internet server. After the transformation into the point on the mapping software, the user can track the object even no PDA in hand.

Settings:

1. Dial and connected with the HI-603 from the normal phone
2. Press # then, press the 4 digit pass codes
3. Press 24 to make HI-603 send the object coordinates to the designated server via SMS. User can check the location from the Internet later.
4. Press 25 to 29 The calculated location coordinates will sent via SMS to the pre set mobile phone (user can per set 5 sets telephone numbers from the web)

GPS receiver saving mode (3*, 3#, 7)

The default setting for the GPS receiver inside the HI-603 the power saving mode function is enabled.

The GPS power saving mode function is based on the moving sensor operation. When the car or object stand still (the moving sensor no action for more than 10 minutes) The GPS receiver will automatically shut down the power supply and into the sleeping mode. When the moving sensor activated again, the GPS receiver will back on powered. This function is most helpful for the application on personal tracking or motorbike tracking because the battery power is limited.

Haicom HI-603

Settings:

1. Dial and connected with the HI-603 from the normal phone
2. Press # then, press the 4 digit pass codes
3. Press 3 # to enable the power sleeping mode and 3* to disable the power saving mode.

To turn off the GPS power supply:

1. Dial and connected with the HI-603 from the normal phone
2. Press 7 (GPS sleeping mode must be enabled)

Remotely control to cut off oil supply (40, 4#, 4*)

1. Dial and connected with the HI-603 from the normal phone
 2. Press # then, press the 4 digit pass codes
 3. Press 40 then hear a long " du " for correct key in and " du du du du " for incorrect key in
 4. The HI-603 will cut off the car oil supply after the above settings
- In case of safety reason, press 4# and the HI-603 will cut off the car oil supply after the above settings when the car speed stop or in 0 km
- If the settings correct, hear a long " du " and the device cut the oil. Or, hear " du du du du " for not success setting
- To disable the oil cutting, press 4* and If the settings correct, hear a long " du " and the device cut the oil. Or, hear " du du du du " for not success setting

Moving sensor and ultra-sound activated (51, 52):

- 51 Cancel the status
52 Activate the status

The default setting for the moving sensor or ultra-sound function is disabled. To activate the functions:

1. Dial and connected with the HI-603 from the normal phone
2. Press # then, press the 4 digit pass codes
3. Press 51 or 52 to disable it
4. Hear a long " du " for correct key in and " du du du du " for incorrect key in

Moving sensor and ultra-sound responding (53, 56):

After pre-set status, when the moving sensor senses the movement, HI-603 will initiate the anti-thief dial back procedure to inform the host. Due to some car is heavy or the moving sensor installed on the easy-to-move place, user can set the moving sensor as continue movement so that the dial back procedure will only activated when the movement is keep happening.

1. Dial and connected with the HI-603 from the normal phone
2. Press # then, press the 4 digit pass codes
3. Press 53 for immediately dial back respond or 56 for delay (10 seconds) responding under continue movement status.

Activate in- car tapping with pass code required or not (8, 54, 55)

To hear people talking in-car and no need pass code required:

1. Dial and connected with the HI-603 from the normal phone
2. Press 8 to enter immediately tapping mode.

For better privacy protection, user can set up the HI-603 so that it will need pass code to enable tapping function.

1. Dial and connected with the HI-603 from the normal phone
2. Press # then, press the 4 digit pass codes
3. Press 54 for hearing people talking in-car and no need pass code required status or press 55 for required pass code to enable tapping function

Pass code required when tracking (1, 57, 58)

Under default setting, user can instantly do the real time tracking. But for personal privacy reason, user can set the condition which only use the pass code to do the tracking.

1. Dial and connected with the HI-603 from the normal phone
2. Press # then, press the 4 digit pass codes
3. Press 1 to start receiving real-time GPS location message for 3 minutes

GPS location fixed dial back (6*)

When GPS inside HI-603 unable to get 3D satellite fixed (the car inside garage, underground, etc. as soon as the GPS gets 3D fixed again, HI-603 will automatically dial back to inform the host.

1. Dial and connected with the HI-603 from the normal phone
2. Press # then, press the 4 digit pass codes
3. Press 6* to get dial back call when the GPS gets satellites fixed again

Dial back when GPS in certain speed (6 #)

Dial back when the car at the first time more than certain speed (say 20 km). The function is to inform host when car is moving in certain speed after parking.

1. Dial and connected with the HI-603 from the normal phone
2. Press # then, press the 4 digit pass codes
3. Press 6# to cut the car power under the above situation

Haicom HI-603

Dial back number testing (71, 74, 77)

Make sure if the all pre set dial back numbers are correctly set up.

1. Dial and connected with the HI-603 from the normal phone.
2. Press # then, press the 4 digit pass codes
3. Press 71 to test the first 3 pre set telephone numbers or 74 to test the last emergency help dial back telephone number. Or press 77 to test the SMS network functionality.

Leaving setting mode and back to voice message send back mode (9)

To re-flash all the settings back to defaults:

1. Dial and connected with the HI-603 . Hear the continue dial tone
2. Press *96#*03890 and hang up

Geo Fencing function set up

User can call the HI-603 and set up the Geo Fencing function so that if the tracker out of the preset radius distance, the tracker will automatically send SMS back to the preset telephone numbers for warning.

Set up procedures:

1. Call the telephone numbers inside the HI-603
2. Hear the continue dial tone and press # 0 0 0 0 and hear "du" for confirm the pass code key in OK.
3. Press 63 XXX #
4. Then, hang up the phone.

Remarks:

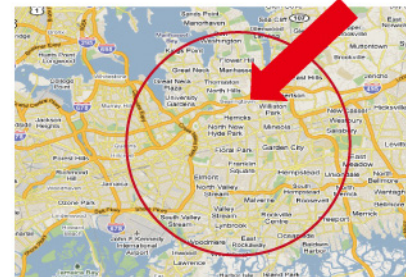
1. The step2 is the normal procedure to entering the control settings
2. 61 is the Geo Fencing command code
3. " XXX " is the radius distance that the user can set up: user can press 001 ~ 254 and the 001 will be 18 meters, 002 will be 36 meters, etc. HI-602DT maximum Geo Fencing radius can be set up to 4,572 meters (254 x 18: around 4.5 Km)

User can set up the GeoFencing from any remote phone anywhere.

After the remote settings completed, HI-603 will sound: B B B B
It will also B B B B when t he user press the Geo Fencing button (please keep pressing the button wait until the coordinates record completed , then, HI-603 will B B B B)

The Geo Fencing radius settings will be saved until the new setting being set up.

Radius of area Configurable



Auto SMS send back set up

There will have 7th dial back telephone number set up (It is 6 set dial back numbers for previous versions)

The 7th set dial back telephone number is for the continue auto SMS send back set up.

The procedures:

5. Call the telephone numbers inside the HI-603
6. Hear the continue dial tone and press 7 XXXXXXXX to set up the 7th dial back telephone number (the device will connected to your server to take the call) Then, hang up the phone.
7. Call the telephone number inside the HI-603
8. Hear the continue dial tone and press # 0 0 0 0 and hear "du" for confirm the pass code key in OK.
9. Press 20510

Remarks:

1. The "XXXXXX" represent the telephone number that you want the HI-603 to dial back.
2. The "0000" is the default pass code
3. 20 is the command for set up the auto SMS send back
4. 5 is auto send back every 5 minites (can set from 1 to 9 minite interval)
5. 10 is auto send back 10 times SMS (can set from 1 time to 99 times SMS set back) set 99 for none stop send back. Set up 00 or power off to stop the command.

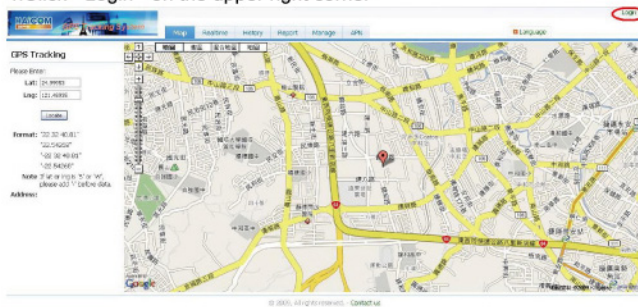
Appendix A

Haicom HI-603

1. Enter Haicom home page: <http://www.haicom.com.tw>
2. Click the " Haicom GPRS " icon



3. Hyper link to Haicom GPRS page
4. Click " Login " on the upper right corner "



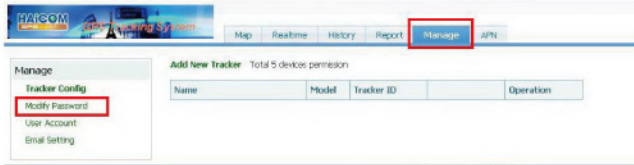
5. On HI-603or HI-603 unit, you will find the code starting with HIXXXXXXX the account and the password is the same.
Account: HIXXXXXXX
Password: HIXXXXXXX



Appendix A

Haicom HI-603

6. After login, select the "Manage" for Modify Password



7. On Realtime page · Select "Add New"

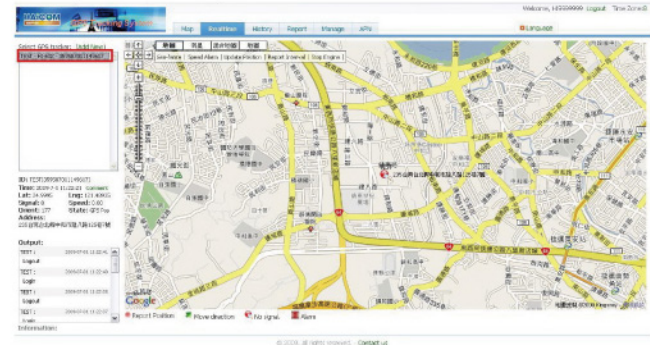


8. The tracker name is what you want to call your tracker
The tracker ID is the IMEI number on the tracker
Click on " Realtime " you will see your real time location

Click on modify password to change the password if you wish to change the password
Click the User account to change the time zone



9. Completed the set up

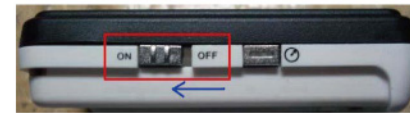
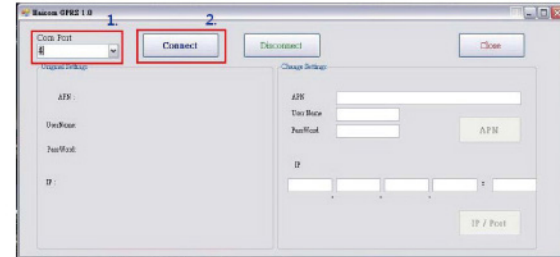


Appendix B

Haicom HI-603



1. Select USB com port
2. connect
3. Switch HI-603or HI-603 Power on



Appendix C

Haicom HI-603

HI-603/ HI-603 dial tone command sets (602V96H)

# Pass	Pass
0 (new new # (change PIN))	*62#580 (reset all command settings)
1 (temporary disable tracking encrypted)	0 new new * (change pass code)
SMS send back	15 (enable alarm function immediately)
21 (to 1st set)	8 (bugging) , 8 again (ringing)
22 (to 2nd set)	9 (back to tracking mode)
23 (to 3rd set)	
24 (to 4th set)	
25 (to 5th set)	
26 (to 6th set)	
2# (Cancel SMS)	
2* (Activate SMS - default)	Set up dial back telephone numbers
40 (Relay 1 open)	1xxxxxxxxxxxxxxxxx (1st set, for alarm trigger)
4* (Relay 1 back to normal)	2xxxxxxxxxxxxxxxxx (2nd set, for alarm trigger)
48 (Relay 2 open)	3xxxxxxxxxxxxxxxxx (3rd set, for alarm trigger)
47 (Relay 2 back to normal)	4xxxxxxxxxxxxxxxxx (4st set, for SOS trigger)
51 (Disable moving sensor - default)	5xxxxxxxxxxxxxxxxx (5st set, for SOS trigger)
52 (moving sensor stand by)	6xxxxxxxxxxxxxxxxx (6st set, for SOS trigger)
53 (immediately SMS send back after movement - default)	7xxxxxxxxxxxxxxxxx (7th set, for SMS multi - sending)
56 (SMS send back 10 seconds after movement)	80602500680239101* (GPRS IP set)
54 (Bugging without pass code - default)	
55 (Pass code required for bugging)	
57 (Tracking without pass code - default)	
58 (pass code required for tracking)	
6* (dial back after GPS fixed)	
6# (dial back when over 20km)	63050#
63 (Active & set up Geofencing)	(050 x 18 = 900m)
61 (remote active)	Range: 001~255
60 (remote disable)	
20 (auto SMS continue send back)	20101
67 (Sounded when press SOS button - default)	20 initial command
68 (Silent when Press SOS button)	1 ~ 9 (every X minite)
64 (Power off warning dial back - default)	01 ~ 88 (send XX times)
65 (disable power off warning)	99 continue none stop
380# (Activate GPRS UDP port)	00 rest
381# (Activate GPRS TOP port)	
300# (Disable GPRS)	
31 (tracking mode)	
32 (ACC mode)	
3* (Disable GPS power saving)	
3# (Active GPS power saving - default)	
7 (GPS sleep immediately)	
9 (GPS full power immediately)	
Dial back test	
71 (to 1st, 2nd, 3rd)	
74 (to 4th, 5th, 6th)	
77 (SMS to 1st, 2nd, 3rd)	

Where to put the GPS

