



Washing machines

Introducing our **brand new range of fully co-ordinated appliances**. Good looking on their own and fabulous together, they're not labelled **iQ** for nothing!

For over 100 years, Siemens has been the leading innovator in creating reliable, cleverly designed and quietly efficient washing machines and washer dryers.

A combination of aesthetically pleasing design with groundbreaking innovation, they truly take the humble chore of washing clothes into a whole new dimension.

Everything about a Siemens laundry appliance is designed to help you manage the range and complexity of modern textiles, with even the smallest details examined and tweaked to give you the ultimate in performance.

One of the major driving forces behind the creation of Siemens' brand new **iQ** range was to offer the customer the ability to achieve seamless design co-ordination between appliances. So the range comes in four distinct variants: **iQ100**, **iQ300**, **iQ500** and **iQ700**, that covers almost every kitchen appliance we make. With all the pieces designed to combine effortlessly with each other.

iQ 100

The range

Typical Siemens style and build quality, offering exceptional value.

iQ 300

The range

Good-looking mid-range appliances equipped with an attractive selection of smart features.

iQ 500

The range

Oozing class and refinement, these machines unite first-class features with top-class technology.

iQ 700

The range

Radical design allied with seriously innovative technology is the basis of these, our premium models.

All our laundry appliances offer superb features and benefits.

They all use our unique Siemens digital sensing technology and totalTextile Management system. Their LC display panels show the progress of the machine through the different programme stages. They have large capacities and can be cold filled. Many also sport hydroSafe leak protection and are sound engineered for an extremely quiet operation.



totalTextile Management

Today's models incorporate a host of features to help you manage the range and complexity of modern textiles. We sum it up as totalTextile Management. This means that our sophisticated sensors and programme options enable all washable textiles to be washed, and dried, efficiently, effectively and safely from the very first rinse to the last second of drying. Home laundry has never been so advanced.

Inverse logic

This function gives a faster wash regardless of the programme selected. It is designed to fit with modern living, where lightly soiled clothes are washed more often at lower temperatures.

autoLoad

No half measures here – this sensor determines precisely what load is being washed and adjusts the programme accordingly. So there's no need for a half load button, just select your programme of choice and hit start.

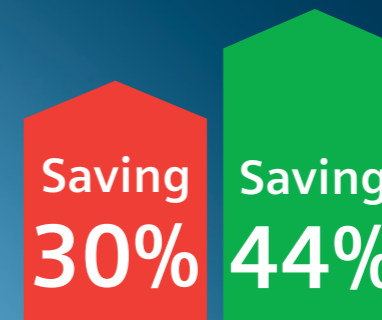
The LC display panel

The LC display panel on the WM16S79CGB, WM14S795GB, WM16S795GB, and WM14S798BUK models for instance, makes using these appliances so simple. The machines recommend the optimum wash load and the segmented display shows their progress through the different programme stages.



Reasons why you should buy a Siemens washing machine.

If we changed all those old washing machines, each one would save the equivalent energy of leaving a light bulb on day and night for 65 days, and enough water to fill a 1 litre kettle 11,143 times.



Best selling model in 1999 was "C" rated using
0.27 kWh

Best selling "A" rated model in 2009 uses
0.19 kWh

Siemens A - 20% rated 2009 model uses
0.15 kWh

Energy consumption per kg (kWh)
Source: GfK 2008

Large drum capacity

The 55 litre drum of the 7kg machines provide ample space for everyday loads. Whilst the increased drum technology of the 8kg models now provide a huge 65 litres of space, perfect for caring for the larger wash load.



Large porthole door

The large 30cm and 32cm door opening, allows easy loading of the larger 7kg and 8kg loads.

As you'd expect, our machines take full advantage of the latest in **technology and innovation.**

The touch control technology found on the fascia of our new washing machines is a world first for laundry products. Durable and easy to clean, the flat surface buttons offer you precision control with just the lightest of touches.



optiWave drum

The new optiWave drum system features a number of unique innovations that make it highly efficient, gentle and time saving. The extra large stainless steel inner drum sits in a machine that will slide comfortably into a standard under the counter gap, without sticking out. The 65 litre capacity lets you wash bigger loads less frequently, although we recommend no more than 8kgs for crease free perfection. You can even wash bulky items like blankets, bedspreads, duvets, curtains and even those unwieldy down-filled ski jackets.

The groundbreaking paddles have been designed to be asymmetric. The steep edges create powerful forces for heavy duty work, the shallow edges allow your clothes to glide gently around the drum, while the surface of the drum itself has been sculpted into a raindrop pattern that emulate the shape of the paddles to offer even more potent yet gentle treatment.



rainFlow

A two-way water in flow system called rainFlow, allows for rapid soaking, reducing the dry friction within the drum to protect delicate fabrics. This smart water flow system gives a constant flow of up to 4 litres per minute, which reduces soaking time, saves water and improves the distribution of water and in turn the detergent throughout all the clothes. The asymmetric paddles distribute the water and detergent mix around the drum faster for a more effective wash performance using less water and detergent.



autoLoad Plus

For the ultimate in loading accuracy and perfect wash performance, this sensor weighs the load and recommends the appropriate detergent dosage, whilst at the same time monitoring and controlling the amount of energy and water needed according to the load size.

Energy efficiency class A

To say that our machines are very economical to use and save on electricity is something of an understatement. All our washing machines boast an energy performance level that is either 10% or 20% better than the standard for class A. 20% less energy models use 0.15kWh/kg compared to the lowest energy value for class A (0.19kWh/kg). 10% more efficient models use 0.17kWh/kg below the threshold value of 0.19kWh/kg.



Self cleaning dispenser

The new self-cleaning detergent tray has been completely redesigned. Specially positioned jet-inlet sprays force water into the tray on every wash, rinsing away any left over powder or tablet residue.



autoStain removal. A world first for Siemens.

Getting rid of awkward stains with our fantastic autoStain Removal System (ASR) is simplicity itself. You don't need any pre-wash treatments, proprietary stain removers or harsh chemicals, just load the clothes choose the appropriate setting and the machine does the rest.



1. Baby Food



2. Blood



3. Butter/Oil



4. Egg



5. Soil and Sand



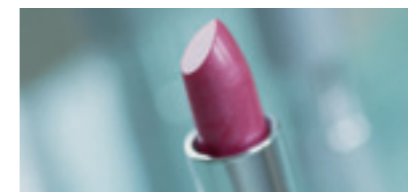
6. Grass



7. Coffee



8. Cosmetics



9. Red wine



10. Chocolate



11. Socks



12. Sweat



13. Tea



14. Tomato



15. Strawberry



16. Orange



The 16 programmes deal with:
1: Baby food 2: Blood 3: Butter/Oil 4: Egg 5: Soil and Sand 6: Grass 7: Coffee 8: Cosmetics 9: Red wine 10: Chocolate 11: The nasty ingrained dirt on the bottom of socks 12: Sweat 13: Tea 14: Tomato 15: Strawberry 16: Orange

What's more, thanks to its sophisticated, precision technology, each programme can actually remove stains at the low temperatures needed for delicate fabrics and textiles, eliminating the need to set the hottest and longest wash.

Washing clothes shouldn't be a chore. That's why we offer you several **specialist programmes and options** to choose from.

With so many different textiles, colours and designs available in the world of fashion, having programmes to suit your varying wash loads has never been so important. Far from being a chore the new range of wash programmes really does put you in control at the touch of a button.



Ultimate woolCare

Removing the need for hand washing your favourite woollen items. This is a gentle cradle system that treats delicate wool and cashmere with the utmost care throughout both the washing and spin drying process.

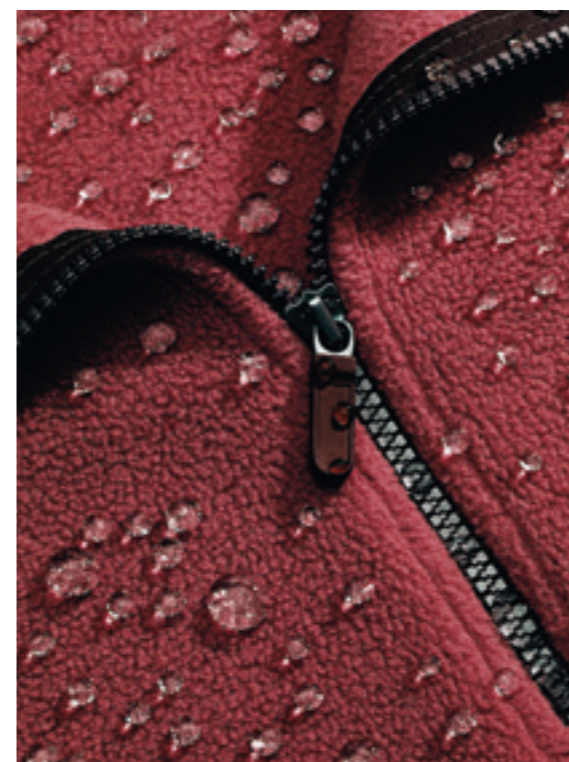


Lingerie

Specifically designed to care for and protect very delicate fabrics, ensuring the optimum wash results and maximum care for those items worn closest to the skin.

Textile guard

This specialist programme works with Nikwax, adding a re-proofing treatment to breathable fabrics. Giving renewed water repellence and extending the life cycle of your favourite outdoor clothes.



Easycare dark

A programme designed for lightly soiled dark laundry. The gentle wash action protects the colours, no "bleeding" and with the special optimised spin cycle, reduces creasing. An extra rinse cycle ensures thorough removal of detergent residue that can cause fading.

Rapid 15 (for 2kg lightly soiled load)

Never again find that your favourite outfit isn't ready to wear. Washed in 15 minutes, this is the perfect quick wash when you're really really in a rush.



Intensive wash

More intensive wash loads to deal with, simply select the intensive wash option to extend wash times and provide "A" class wash results.

Curtains

A programme specially designed to remove all dust particles with a high water level and specific spin profile to prevent creasing.

Outdoor programme designed to protect and preserve all your outdoor clothing

The extended rinse cycles of the outdoor wear programme ensure complete removal of even the most ground in dirt.



Less ironing

Selected, this option changes the spin profile to provide a gentler spin preventing heavy creasing whilst still removing the optimum amount of water for easier drying.



Shirts/Blouses

Work or school, so many of us wear shirts on a daily basis. This dedicated programme designed to wash 7 shirts at a time, has been specifically created to wash with care. Reducing wash agitation and spin to ensure creasing is reduced making the way for easier ironing.



At Siemens, quality, safety and the environment mean a great deal.



Tried and tested

All our washing machines and our washer dryer are 100% tested during production for safety, function and noise. Door hinges and metal door catches are tested to open a minimum of 20,000 times: that's equal to 48 years use – whilst one door was tested for up to 60,000 uses. Further more, 98% of all components in our washing machines are recyclable.

hydroSafe

It's comforting to know that most Siemens washing machines are guaranteed to be 100% leak proof. If ever a leak occurs, the sensor shuts down the machine immediately.



Multiple water protection

All our machines are fitted with a supply hose designed to withstand 7 times normal water pressure. They also have overflow prevention in the event of a malfunction of the machine, safe water circulation through the appliance interior and electrical locking on the porthole to prevent it being opened unintentionally.

The child lock option on the WM16S79CGB, WM16S795GB, WM14S795GB, and WM14S798BUK washing machines prevent curious hands from changing a programme.



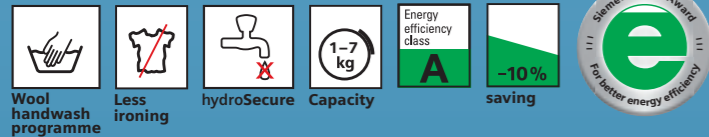
Stainless steel inner drum

Made from stainless steel the inner drum is securely encased in the outer drum. The outer drum is made of polynox, a material used extensively in the aerospace and automobile industry, where strength and longevity are essential. This special material does not rust and helps to maintain heat within the drum for efficient energy usage.

Energy and water saving

All our washing machines have an energy performance level of either 10% or 20% better than the standard for A and precise load recognition technology that will adjust the amount of water needed according to the size of the load. That's why our washing machines use only 7 litres of water per kg of dry laundry. 20% better models are highlighted in the range with a gold award and 10% better models with a silver award.





**Front loading automatic washing machine
WM14E162GB – 1400 rpm spin**

White with white door
Large 30 cm 180° opening door with metal door catch
Programme status indicators

**Digital sensing technology
autoLoad**

Dynamic motion control sensor
Anti-leak sensor
Hi precision temperature sensor
Continuous water level sensor

**totalTextile Management
15 programmes**

Hand wash wool – ultimate woolCare system
Extra rinse button
Less ironing button
Prewash button

Intensive button for power boost 'A' wash
Delicates programme
Short wash facility standard on all programmes reducing washing time by 40%
Mixed fabric 50 minute quick wash programme
Aquatronic wash system

hydroSecure anti-leak protection
Sound engineered
7kg capacity
Cold fill

Spin speed selection 1400 to 400 rpm
End of cycle buzzer
A less 10% energy
A energy, A wash and B spin class
Dimensions: 847 H x 600 W x 590 D mm



**Front loading automatic washing machine
WM12E46SGB – 1200 rpm spin**

Stainless steel front with silver door
Large 30 cm 180° opening door with metal door catch
Interactive LED display with variable temperature selection
Time delay (1-24 hours)
Remaining time indicator

**Digital sensing technology
autoLoad**

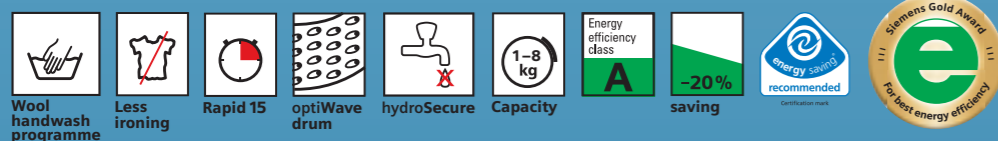
Dynamic motion control sensor
Anti-leak sensor
Hi-precision temperature sensor
Continuous water level sensor

**totalTextile Management
15 programmes**

Hand wash wool – ultimate woolCare system
Extra rinse button
Less ironing button
Prewash button
Mixed fabrics 50 minute quick wash programme

Delicates/silk programme
Rapid 15 minute quick wash programme
Short wash facility standard on all programmes reducing washing time by 40%
Shirts/business programme
Easy care dark programme
Outdoor wear programme
Powerwash 60°C programme
Stains programme
Intensive button for power boost 'A' wash
Multi-programme prewash
Aquatronic wash system

hydroSecure anti-leak protection
Sound engineered
7kg capacity
Cold fill
Spin speed selection 1200 to 400 rpm
A less 20% energy
A energy, A wash and B spin class
Dimensions: 847 H x 600 W x 590 D mm



**Front loading automatic washing machine
WM16S383GB – 1600 rpm spin**

White with white door
Large 32 cm 165° opening door with sloping step design and metal door catch
LED display with programme progress indicators
Time delay (1-24 hours)
Remaining time indicator

**Digital sensing technology
autoLoad**

Dynamic motion control sensor
Anti-leak sensor
Hi precision temperature sensor
rainFlow water inflow sensor
Continuous water level sensor
Detergent over dosage detection
Self cleaning detergent drawer

totalTextile Management
15 programmes
Hand wash wool – ultimate woolCare system
Extra rinse button
Less ironing button
Prewash button
Intensive button for power boost 'A' wash
Delicates/silk programme
Short wash facility standard on all programmes reducing washing time by 40%
Rapid 15 minute quick wash programme

Mixed fabric 50 minute quick wash programme
optiWave wash system with cascade

hydroSecure anti-leak protection
Sound engineered
8kg capacity
Cold fill
Spin speed selection 1600 to 400 rpm
End of cycle buzzer
A less 20% energy
A energy, A wash and A spin class
Dimensions: 842 H x 600 W x 590 D mm

Also available in 1400 rpm spin as model WM14S383GB

- Specification as left except:
- 1400 to 400 rpm spin speed
- White with white door
- B spin class

Also available in 1200 rpm spin as model WM12S383GB

- Specification as left except:
- 1200 to 400 rpm spin speed
- White with white door
- B spin class



**Front loading automatic washing machine
WM16S494GB – 1600 rpm spin**

White with aluminium coloured door trim
Large 32 cm 165° opening door with sloping step design and metal door catch
Interactive LED display with variable temperature selection
Time delay (1-24 hours)
Remaining time indicator

**Digital sensing technology
autoLoad**

Dynamic motion control sensor
Anti-leak sensor
Hi-precision temperature sensor
rainFlow water inflow sensor
Continuous water level sensor
Detergent over dosage detection
Self cleaning detergent drawer

totalTextile Management
15 programmes
Hand wash wool – ultimate woolCare system
Extra rinse button
Less ironing button
Prewash button
Intensive button for power boost 'A' wash
Delicates/silk programme
Short wash facility standard on all programmes reducing washing time by 40%
Rapid 15 minute quick wash programme

Mixed fabric 50 minute quick wash programme
Easy care dark programme
Textile guard re-proofing programme
Shirts/blouses programme
Lingerie programme
Curtains programme
optiWave wash system with cascade

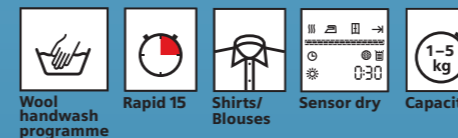
hydroSafe 100% anti-leak protection guarantee
Sound engineered
8kg capacity
Cold fill
Spin speed selection 1600 to 400 rpm
End of cycle buzzer
A less 20% energy
A energy, A wash and A spin class
Dimensions: 842 H x 600 W x 590 D mm

Also available in 1400 rpm spin as model WM14S494GB

- Specification as left except:
- 1400 to 400 rpm spin speed
- White with aluminium coloured door trim
- B spin class

Also available in 1200 rpm spin as model WM12S494GB

- Specification as left except:
- 1200 to 400 rpm spin speed
- White with aluminium coloured door trim
- B spin class



**Front loading automatic washing machine
WM16S79CGB – 1600 rpm spin**

White with shiny chrome coloured door trim
Large 32 cm 165° opening door with sloping step design and metal door catch
Interactive LCD display with variable temperature selection
Time delay (1-24 hours)
Time remaining indication

Digital sensing technology

autoLoad Plus
Dynamic motion control sensor
hydroSensor intelligent eye monitoring and controlling rinse cycles
In flow metering sensor
Anti-leak sensor
Hi-precision temperature sensor
rainFlow water inflow sensor
Continuous water level sensor
Detergent over dosage display
Self cleaning detergent drawer
Load weight recommendation and detergent measurement

totalTextile Management
15 programmes

Hand wash wool – ultimate woolCare system
Delicates/silk programme
Short wash facility standard on all programmes reducing washing time by 40%
Rapid 15 minute quick wash programme

Mixed fabric 50 minute quick wash programme
Easy care dark programme
Textile guard re-proofing programme
autoStain Removal System (ASR)
Shirts/blouses programme
Lingerie programme
Curtains programme
optiWave wash system with cascade

hydroSafe 100% anti-leak protection guarantee
Sound engineered
8kg capacity
Cold fill
Spin speed selection 1600 to 400 rpm
Electronic child safety package
Drum interior light

End of cycle buzzer
A less 20% energy
A energy, A wash and A spin class
Dimensions: 842 H x 600 W x 590 D mm

Also available in 1600 rpm spin as model WM16S795GB

- Specification as left except:
- 1600 to 400 rpm spin speed
- White with aluminium coloured door trim
- A spin class

Also available in 1400 rpm spin as model WM14S795GB

- Specification as left except:
- 1400 to 400 rpm spin speed
- White with aluminium coloured door trim
- B spin class

Also available in 1400 rpm spin as black model WM14S79BUK

- Specification as left except:
- 1400 to 400 rpm spin speed
- Black with silver door
- B spin class

**Washer dryer
WD12D520GB – 1200 rpm spin**

White with white door
Large 30 cm 180° opening door with metal door catch
LCD display with programme progress indicators
Time delay (1-24 hours)
Remaining time indicator

Digital sensing technology

autoLoad
Dynamic motion control sensor
Anti-leak sensor
Hi precision temperature sensor
Continuous water level sensor

totalTextile Management
15 programmes
Hand wash wool – ultimate woolCare system
Extra rinse button
Prewash button
Intensive button for power boost 'A' wash
Delicates/silk programme
Rapid 15 minute quick wash programme

Short wash facility standard on all programmes reducing washing time by 40%

Mixed fabric 50 minute quick wash programme
Easy care dark programme
Outdoor wear programme
Shirts/blouses programme

Sensor drying
2 drying levels
Auto dry function and time selection options

Sound engineered
5kg capacity
Cold fill
Spin speed selection 1200 to 400 rpm
End of cycle buzzer
C energy
A wash
Dimensions: 850 H x 600 W x 560 D mm

Product specifications for freestanding washing machines **SIEMENS**

Appliance type	Washing machines					
	IQ 100	IQ 100	IQ 300	IQ 300	IQ 300	IQ 500
Design family	WM14E162GB	WM12E465GB	WM16S383GB	WM14S383GB	WM12S383GB	WM16S494GB
Model number						
Description						
Removable top	●	●	●	●	●	●
Door hinge	Left-hand	Left-hand	Left-hand	Left-hand	Left-hand	Left-hand
Colour panel	White	Silver	White	White	White	White
Colour cabinet	White	Stainless steel front	White	White	White	White
Technical data						
Connection rating	watts 2300	2300	2300	2300	2300	2300
Current	amps 13	13	13	13	13	13
Voltage	volts 220-240	220-240	220-240	220-240	220-240	220-240
Frequency	Hz 50	50	50	50	50	50
Dimensions						
Length electrical supply cord	metres 160.0	160.0	175.0	175.0	175.0	175.0
Height with worktop	mm 847	847	842	842	842	842
Height without worktop/build under	mm 820	820	820	820	820	820
Dimensions of the product (HxWxD)	mm 847 x 600 x 590	847 x 600 x 590	842 x 600 x 590	842 x 600 x 590	842 x 600 x 590	842 x 600 x 590
Dimensions of the packed product (HxWxD)	mm 900 x 650 x 650	900 x 660 x 650	880 x 660 x 690	880 x 660 x 690	880 x 660 x 690	880 x 660 x 690
Net weight	kg 81.00	70.00	81.00	81.00	81.00	81.00
Gross weight	kg 82.00	72.00	82.00	82.00	82.00	82.00
Performance						
Energy efficiency class ¹	A	A	A	A	A	A
Energy consumption	kWh 1.19	1.05	1.20	1.20	1.20	1.20
Washing performance class	A	A	A	A	A	A
Spin drying performance class	B	B	A	B	B	A
Maximum spin speed	rpm 1400	1200	1600	1400	1200	1600
Capacity cotton	kg 7.0	7.0	8.0	8.0	8.0	8.0
Water consumption	litres 49	47	56	56	56	56
Noise level washing (dB(A) re 1 pW)	dB 56	59	54	54	54	54
Noise level spinning (dB(A) re 1 pW)	dB 76	76	74	74	74	74
Total annual water consumption	litres 9800	9400	11200	11200	11200	11200
Total annual energy consumption	kWh 238	210	240	240	240	240
Moisture content % on dry load after maximum spin ²	50	53	44	50	53	44
Average washing time cotton 60°C (full load) ³	mins 156	178	205	205	205	205
Energy/water consumption 95°C cotton	kWh/l 2/75	2/75	2.42/94	2.42/94	2.42/94	2.42/94
Energy/water consumption 40°C colour	kWh/l 0.65/60	0.65/60	0.83/80	0.83/80	0.83/80	0.83/80
Energy/water consumption 40°C easy care	kWh/l 0.55/40	0.55/50	0.54/53	0.54/53	0.54/53	0.54/53
Energy/water consumption 30°C delicates	kWh/l 0.25/34	0.25/38	0.2/39	0.2/39	0.2/39	0.2/39
Energy/water consumption 30°C woollens	kWh/l 0.15/30	0.15/34	0.2/47	0.2/47	0.2/47	0.2/47
Special functions						
Spin speed options	Variable	Variable	Variable	Variable	Variable	Variable
Button options	Extra rinse, Intensive, Prewash, Start, Spin speed reduction, Less ironing	Finish in, Prewash, Temperature selection, Spin speed reduction, Extra rinse, Start	Start, Prewash, Spin speed reduction, Intensive, Extra rinse, Less ironing, Finish in	Start, Extra rinse, Spin speed reduction, Prewash, Finish in, Less ironing, Intensive	Start, Extra rinse, Spin speed reduction, Prewash, Finish in, Less ironing, Intensive	Intensive, Less ironing, Extra rinse, Prewash, Start
Foam control/balance control	● / ●	● / ●	● / ●	● / ●	● / ●	● / ●
Water protection system	hydroSecure	hydroSecure	hydroSecure	hydroSecure	hydroSecure	hydroSafe
Cold wash option	●	●	●	●	●	●
Progress indicator	LED	LED-display	LED	LED	LED	LED-display
Time remaining	●	●	●	●	●	●
Start delay time max	hours 24	24	24	24	24	24
Half load option	Automatic adjustment	Automatic adjustment	Automatic adjustment	Automatic adjustment	Automatic adjustment	Automatic adjustment
Pre-wash	●	●	●	●	●	●
Inverse logic	Wash time reduced as standard	Wash time reduced as standard	Wash time reduced as standard	Wash time reduced as standard	Wash time reduced as standard	Wash time reduced as standard
Wool programme	Machine and hand wash	Machine and hand wash	Machine and hand wash	Machine and hand wash	Machine and hand wash	Machine and hand wash
Rinse hold	●	●	●	●	●	●
Delicates/silk	Available	Available	Available	Available	Available	Available
Curtaains/lingerie	●	●	●	●	●	● / ●
Shirts/blouses	●	●	●	●	●	●
Outdoor wear/textile guard	●	● / -	●	●	●	- / ●
Rapid 15	●	●	●	●	●	●
autoStain removal system (ASR)	●	●	●	●	●	●
Load measurement/detergent dosage	●	●	●	●	●	●
Self cleaning detergent drawer	●	●	●	●	●	●
Specification						
Door opening	180	180	165	165	165	165
Drum volume	litres 55	55	65	65	65	65
Cold fill	●	●	●	●	●	●
Optional accessories	WX975600, WZ10130, WZ20430, WZ20460	WX975600, WZ10130, WZ20430, WZ20460	WX975600, WZ10130, WZ20430, WZ20460	WX975600, WZ10130, WZ20430, WZ20460	WX975600, WZ10130, WZ20430, WZ20460	WX975600, WZ10130, WZ20430, WZ20460
Programme end indication	LED, Acoustic	Acoustic, LED-display	LED-display, Acoustic	LED-display, Acoustic	LED-display, Acoustic	Acoustic, LED-display
Loading sensor	●	●	●	●	●	●
Cottons/coloureds	60°C Stains, 40°C, 60°C, 90°C, 30°C	Economy, Intensive, Standard cold 90°C	60°C Eco, 90°C, 40°C, 30°C, 60°C	40°C, 60°C, 60°C Eco, 90°C, 30°C	40°C, 60°C, 60°C Eco, 90°C, 30°C	30°C, 50°C, 40°C, 60°C, 60°C Eco, 90°C, Cold
Easy-care programme	60°C, 40°C, 30°C	Standard cold 60°C	40°C, 60°C, 30°C	60°C, 40°C, 30°C	60°C, 40°C, 30°C	50°C, 40°C, 30°C, Cold, 60°C
hydroSensor						
Depth with door open (90°)	99.00	99.00	99.00	99.00	99.00	99.00
Appliance depth including wall distance	59	59	59	59	59	59
Temperature selection	Programme selector	Push button	Programme selector	Programme selector	Programme selector	Push button

● Yes, model has this feature

¹ Energy labelling data based on 6kg 60°C cotton cold fill EN60456

² The lower the %, the dryer the fabric

³ Figures are approximate since installation conditions vary

Inlet valve connected directly to ¾" screwed joint

Water pressure required: 1-10 bars

Flow rate: 8 litres per minute

Product specifications for freestanding washing machines **SIEMENS**

Appliance type	Washing machines						Washer dryer
	IQ 500	IQ 500	IQ 700	IQ 700	IQ 700	IQ 700	IQ 500
Design family	WM14S494GB	WM12S494GB	WM16S79CGB	WM16S795GB	WM14S795GB	WM14S798UK	WD12D520GB
Model number							
Description							
Removable top	●	●	●	●	●	●	●
Door hinge	Left-hand	Left-hand	Left-hand	Left-hand	Left-hand	Left-hand	Left-hand
Colour panel	White	White	White	White	White	Black	White
Colour cabinet	White	White	White	White	White	Black	White
Technical data							
Connection rating	watts 2300	2300	2300	2300	2300	2300	2200
Current	amps 13	13	13	13	13	13	13
Voltage	volts 220-240	220-240	220-240	220-240	220-240	220-240	230
Frequency	Hz 50	50	50	50	50	50	50
Dimensions							
Length electrical supply cord	metres 175.0	175.0	175.0	175.0	175.0	175.0	175.0
Height with worktop	mm 842	842	842	842	842	842	850
Height without worktop/build under	mm 820	820	820	820	820	820	820
Dimensions of the product (HxWxD)	mm 842 x 600 x 590	842 x 600 x 590	842 x 600 x 590	842 x 600 x 590	842 x 600 x 590	842 x 600 x 590	850 x 600 x 560
Dimensions of the packed product (HxWxD)	mm 880 x 660 x 690	880 x 660 x 690	880 x 660 x 690	880 x 660 x 690	880 x 660 x 690	880 x 660 x 690	990 x 670 x 620
Net weight	kg 81.00	81.00	81.00	81.00	81.00	77.00	73
Gross weight	kg 82.00	82.00	82.00	82.00	82.00	78.00	78
Performance							
Energy efficiency class ¹	A	A	A	A	A	A	C
Energy consumption	kWh 1.20	1.20	1.20	1.20	1.20	1.20	0.95
Washing performance class	A	A	A	A	A	A	A
Spin drying performance class	B	B	A	A	B	B	B
Maximum spin speed	rpm 1400	1200	1600	1600	1400	1400	1200
Capacity cotton	kg 8.0	8.0	8.0	8.0	8.0	8.0	5/2.5 drying
Water consumption	litres 56	56	56	56	56	56	114 wash and dry
Noise level washing (dB(A) re 1 pW)	dB 54	54	54	54	54	54	62
Noise level spinning (dB(A) re 1 pW)	dB 71	71	74	74	71	71	75
Total annual water consumption	litres 11200	11200	11200	11200	11200	11200	9400
Total annual energy consumption	kWh 240	240	240	240	240	240	190
Total annual water consumption wash/dry	litres						22800
Total annual energy consumption wash/dry	kWh						920
Moisture content % on dry load after maximum spin ²	50	53	44	44	50	50	53
Average washing time cotton 60°C (full load) ³	mins 205	205	205	205	205	205	315 wash and dry
Energy/water consumption 95°C cotton	kWh/l 2.42/94	2.42/94	2.42/81	2.42/81	2.42/81	2.42/81	1.72/59
Energy/water consumption 40°C colour	kWh/l 0.83/80	0.83/80	0.83/67	0.83/67	0.83/67	0.83/67	0.46/52
Energy/water consumption 40°C easy care	kWh/l 0.54/53	0.54/53	0.54/43	0.54/43	0.54/43	0.54/43	0.34/34
Energy/water consumption 30°C delicates	kWh/l 0.2/39	0.2/39	0.2/30	0.2/30	0.2/30	0.2/30	0.32/39
Energy/water consumption 30°C woollens	kWh/l 0.2/47	0.2/47	0.17/30	0.17/30	0.17/30	0.17/30	0.17/33
Special functions							
Spin speed options	Variable	Variable	Variable	Variable	Variable	Variable	Variable
Button options	Prewash, Intensive, Start, Extra rinse, Less ironing	Prewash, Intensive, Start, Extra rinse, Less ironing	Start, Temperature selection, Spin speed reduction	Start, Temperature selection, Spin speed reduction	Start, Temperature selection, Spin speed reduction	Start, Temperature selection, Spin speed reduction	Start, Temperature selection, Drying, Extra rinse, Finish in, Intensive, Spin speed reduction, Prewash
Foam control/balance control	● / ●	● / ●	● / ●	● / ●	● / ●	● / ●	● / ●
Water protection system	hydroSafe	hydroSafe	hydroSafe	hydroSafe	hydroSafe	hydroSafe	hydroSafe
Cold wash option	●	●	●	●	●	●	●
Progress indicator	LED-display	LED-display	LCD-display	LCD-display	LCD-display	LCD-display	LCD-display
Time remaining	●	●	●	●	●	●	●
Start delay time max	hours 24	24	24	24	24	24	24
Half load option	Automatic adjustment	Automatic adjustment	Automatic adjustment	Automatic adjustment	Automatic adjustment	Automatic adjustment	Automatic adjustment
Pre-wash	●	●	●	●	●	●	●
Inverse logic	Wash time reduced as standard	Wash time reduced as standard	Wash time reduced as standard	Wash time reduced as standard	Wash time reduced as standard	Wash time reduced as standard	Wash time reduced as standard
Wool programme	Machine and hand wash	Machine and hand wash	Machine and hand wash	Machine and hand wash	Machine and hand wash	Machine and hand wash	Machine and hand wash
Rinse hold	●	●	●	●	●	●	●
Delicates/silk	Available	Available	Available	Available	Available	Available	Available
Curtaains/lingerie	● / ●	● / ●	● / ●	● / ●	● / ●	● / ●	● / ●
Shirts/blouses	●	●	●	●	●	●	●
Outdoor wear/textile guard	●	●	●	●	●	●	●
Rapid 15	●	●	●	●	●	●	●
autoStain removal system (ASR)	●	●	●	●	●	●	●
Load measurement/detergent dosage	●	●	●	●	●	●	●
Self cleaning detergent drawer	●	●	●	●	●	●	●
Specification							
Door opening	165	165	165	165	165	165	180
Drum volume	litres 65	65	65	65	65	65	42
Cold fill	●	●	●	●	●	●	●
Optional accessories	WX975600, WZ10130, WZ20430, WZ20460	WX975600, WZ10130, WZ20430, WZ20460	WX975600, WZ10130, WZ20430, WZ20460	WX975600, WZ10130, WZ20430, WZ20460	WX975600, WZ10130, WZ20430, WZ20460	WX975600, WZ10130, WZ20430	WZ10190
Programme end indication	Acoustic, LED-display	LED-display, Acoustic	Acoustic, LCD-display	Acoustic, LCD-display	Acoustic, LCD-display	Acoustic, LCD-display	LCD-display
Loading sensor	●	●	●	●	●	●	●
Cottons/coloureds	90°C, 60°C, 60°C Eco, 50°C, Cold, 30°C, 40°C	90°C, 60°C, 60°C Eco, 50°C, Cold, 30°C, 40°C	60°C, Cold, 40°C, 50°C, 60°C Eco, 70°C, 80°C, 90°C, 30°C	60°C, Cold, 40°C, 50°C, 60°C Eco, 70°C, 80°C, 90°C, 30°C	60°C, 40°C Eco, 50°C, 40°C, Cold, 30°C, 70°C, 30°C	Cold, 40°C, 90°C, 80°C, 70°C, 30°C, 60°C Eco, 60°C, 50°C	60°C Eco, 50°C, 60°C, 30°C, Economy, Intensive, Standard, 40°C, 90°C, Cold
Easy-care programme	Cold, 60°C, 50°C, 30°C, 40°C	Cold, 60°C, 50°C, 30°C, 40°C	30°C, 50°C, 40°C, Cold, 60°C	30°C, 50°C, 40°C, Cold, 60°C	60°C, 40°C, 30°C, Cold, 50°C	60°C, 50°C, 30°C, Cold, 40°C	50°C, 40°C, 30°C, 60°C, Cold
hydroSensor							